

FURNACE QUICK CHECK MOTOR WILL NOT RUN

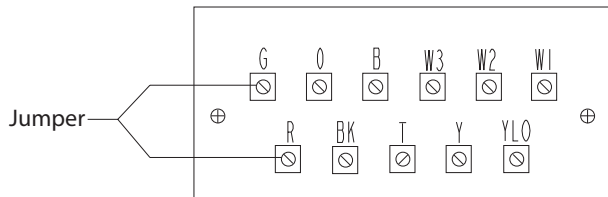
These service procedures will work on ECM-2™ motors and their motor control board and their 16 wire low voltage control cable.

1. Jumper 24 Volt A.C. "R" terminal to "G" terminal on the low voltage terminal board.

Does motor run?

No: Go to step #2

Yes: Motor runs, check comfort control and comfort control wire.

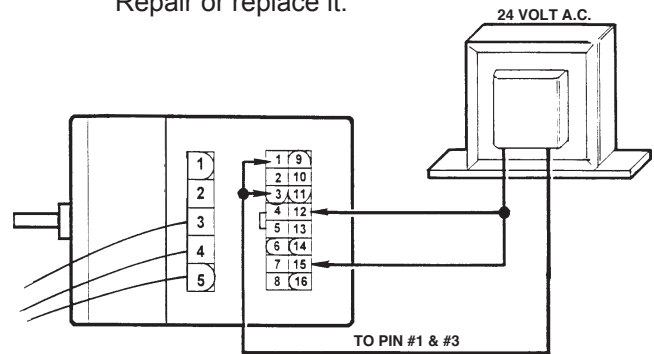


3. Unplug 16 wire low voltage harness from the motor. Jumper 24 volts A.C. to motor low voltage plug pins #12 and #15 and pins #1 and #3 which are common.

Does motor run?

No: Got to step #4.

Yes: Fault is in the 16 wire low voltage harness. Repair or replace it.

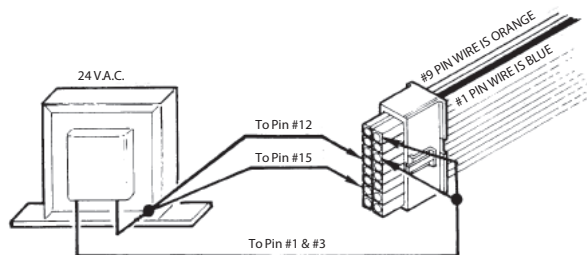


2. Unplug 16 wire low voltage harness from the interface board. Jumper 24 volts A.C. to pins #12, #15 and common pins #1 and #3.

Does the motor run?

No: Go to step #3.

Yes: Replace the variable speed interface board on the furnace.



4. Is the line voltage to the motor high voltage power plug pin #4 and pin #5 correct?

No: Correct line voltage fault.

Yes: Live voltage correct and motor will not run. Replace module.

